

SHARE:

[Join Our Email List](#)



Northwest Connecticut  
Land Conservancy



PROTECTING LAND AND WATER  
FOR PEOPLE, FOR WILDLIFE, FOREVER.

[DONATE NOW](#)

## September Newsletter

Dear Catherine,

Late September in New England is the perfect time for a picnic and gathering with friends.

I hope you will join us this **Saturday, September 30** for NCLC's **annual picnic** at the Hadlow Preserve, located at 9 Crozier Hill Road, Sherman, CT. We will gather between noon and 2 pm for this free, family-friendly event, with lunch, kites, games, and a face painter. In the event of rain, we'll host the picnic at the same time on Sunday, October 1. **While the event is**

free, we ask that you register [here](#) so that we know how many burgers to buy!

This month, I am also delighted to announce that we are presenting a public lecture by Leila Philip, author of ***Beaver Land***, an NPR Science Friday Book Club Selection and New York Times Editors' Choice. I hope you will [register](#) for the event, which will take place at the Kent School Auditorium.

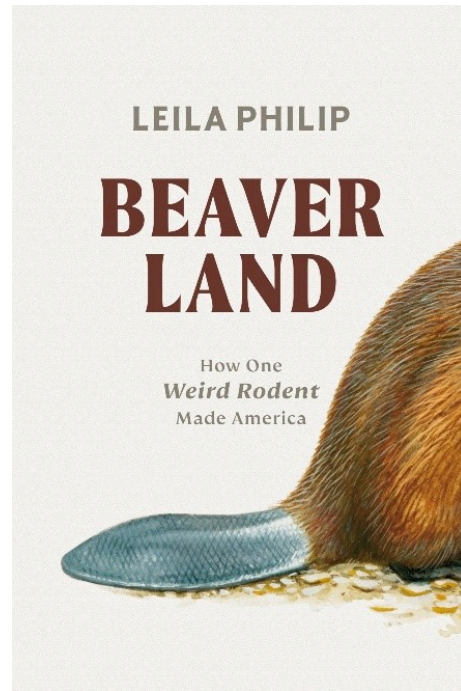
Finally, in this month's newsletter, we honor the life of an extraordinary conservationist, Mel Bristol. Those of us who love the wild and working lands of Northwest Connecticut owe a debt of gratitude to Mel, whose vision and stewardship of the land served us all.

*Catherine*

Catherine M. Rawson  
Executive Director



**October 28**  
**Book Talk with Leila Philip,**  
**Author of *Beaver Land***



A **New York Times Editors' Choice** and **NPR Science Friday Book Club Selection**, Leila Philip's *Beaver Land* offers a "fascinating portal for readers to enter into the mysteries of that world themselves" (*The Washington Post*) in a book that's "as full of charm and wonder as its beguiling protagonist" (*The Wall Street Journal*). This lively presentation will introduce the audience to an animal that features prominently in both American economic and natural history. [Read more.](#)

## Welcome Shelley Rose

NCLC is thrilled to welcome Shelley Rose as our new agricultural program manager. In April, NCLC was awarded a prestigious \$750,000 grant from the Connecticut Department of Agriculture's **Climate-Smart Agriculture and Forestry Grant Program**. As part of this grant, Shelley will provide professional support to Northwest Connecticut's agricultural community. Prior to joining NCLC, Shelley worked with the CT Council on Soil and Water Conservation to coordinate and develop a healthy soil action plan for the state. She will earn her Master of Food and Agriculture Law and Policy degree from Vermont Law and Graduate School in the fall of 2023. Shelley looks forward to partnering with our region's farmers and fellow land trusts to increase climate resiliency.



# Remembering Mel Bristol



Melvin Lee Bristol, known to friends and family as Mel, passed away on June 10 at the age of 86. Mel served on the board of Naromi Land Trust (now NCLC). Mel was a dedicated steward of his land, Bloomingfields Farm, located in northern Sherman and contiguous with the Wimisink Preserve. His careful stewardship of his land helped maintain the ecological integrity of the Wimisink Preserve and in 2019 he granted an easement over the portion of his lands that abut the preserve, extending the buffer of protection around this special place. [Click here to read more about an extraordinary life lived in connection with the land.](#)

## Spotted Lanternfly See It and Squash It

The spotted lanternfly (*Lycorma delicatula*), is an exotic, invasive insect that feeds on more than 70 species of plants. In Connecticut, approximately 47% of the forest trees are considered susceptible to the spotted lanternfly. It is also known to feed upon fruit trees, threatening Connecticut's orchards. Spotted lanternflies have been seen in multiple [Connecticut towns](#), including in Litchfield and Fairfield Counties.

**You can help!** If you see this insect, [you can report it online](#), and then squash it.

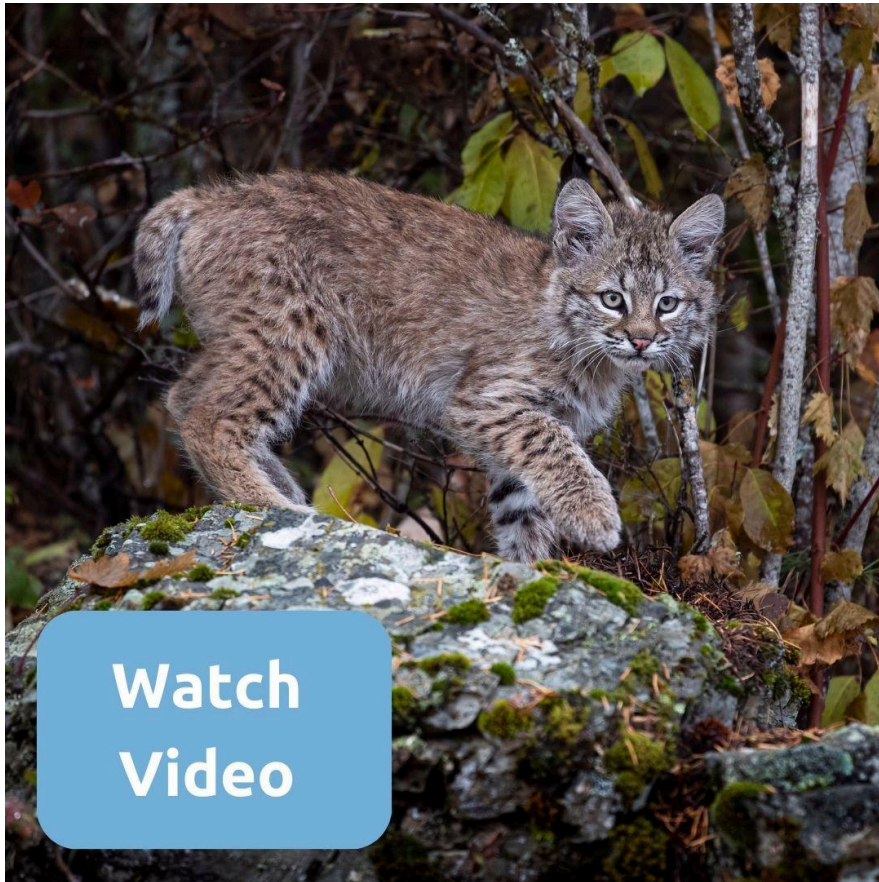


Adult spotted lanternfly. Commonly seen between July and December.



Juvenile spotted lanternfly in red nymph stage.

## Bobcat Kittens at Play!



Need a boost? An NCLC volunteer shared this terrific trail camera footage that captured bobcat kittens at play. Bobcats are an important predator species in Connecticut that rely on forested corridors to move throughout their range. Have you seen a bobcat?

**You can report bobcat sightings online.**

# Upcoming Events



## Annual Free Picnic

September 30  
Kent

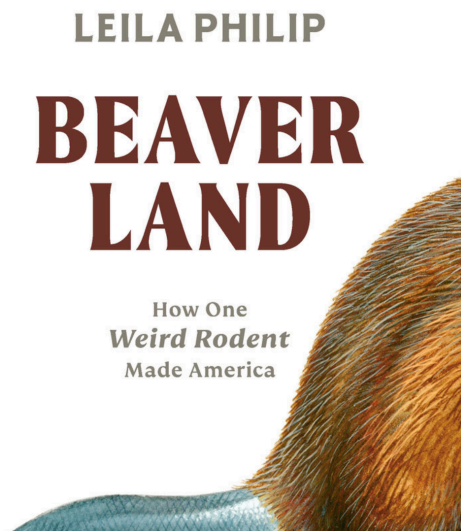
[Free Tickets](#)



## Discover the Herrick Preserve

October 7  
Sherman

[Register Here](#)



## Author Talk Leila Philip of Beaver Land

October 28  
Kent

[Purchase \\$5 Ticket](#)



## Wingmasters Presents New England Birds of Prey

November 4  
Washington

[Register Here](#)



## Job Opportunities

NCLC is hiring and we hope you will join our team. NCLC welcomes people of all backgrounds, identities, and beliefs to join us in achieving our mission to protect the lands and waters of Northwest Connecticut forever. **To apply for an open position, please visit our Job Opportunities page.**

Northwest Connecticut Land Conservancy is a nonprofit regional land trust and the largest land trust in the state. As a guardian of natural and working lands, public recreation areas, and drinking water resources, NCLC permanently protects 13,200 acres (and growing) of vast, connected natural areas in Litchfield and northern Fairfield Counties.

[DONATE NOW](#)

[GET INVOLVED](#)

[OUR TRAILS](#)

### Northwest Connecticut Land Conservancy

P.O. Box 821, Kent, CT 06757

Phone: 860.927.1927 | Fax: 860.927.1928

[info@ctland.org](mailto:info@ctland.org)

[Unsubscribe catherine@ctland.org](#)

[Update Profile](#) | [Constant Contact Data Notice](#)

Sent by catherine@ctland.org powered by



Try email marketing for free today!