

SHARE:

[Join Our Email List](#)



Northwest Connecticut
Land Conservancy



PROTECTING LAND AND WATER
FOR PEOPLE, FOR WILDLIFE, FOREVER.

January Newsletter

Dear Catherine,

I love the word *subnivian*. It describes a sliver of life between snow and soil that teems with microbial activity working to make our soil healthier. Even in the depths of winter, natural systems are busy -- and so are we. **This month, we are launching our climate-smart agriculture program to support Northwest Connecticut's farms,**



working on our strategic plan (and hoping for your input), and planning volunteer work days to connect you to the natural beauty of the region.

This week's snow-covered landscape may be an anomaly in our children's future. The scientific data is clear: 2023 was the warmest year on record. That data is reinforced by what we are seeing on the land that we protect and steward for you.

Warmer air holds more water vapor, leading to increased precipitation and flooding. Recent climate-related floods swept away several of our trail bridges at our public preserves. Our stewardship team is planning volunteer workdays to replace these footbridges. I hope you will join us for one of these workdays to help protect the land you love.

Catherine

Catherine M. Rawson
Executive Director



NCLC Announces Climate-Smart Agricultural Program



Building Resiliency on Northwest Connecticut Farmland

ANNOUNCING NCLC'S CLIMATE-SMART AGRICULTURE GRANT PROGRAM

In 2023, NCLC was awarded a prestigious \$750,000 grant from the Connecticut Department of Agriculture's **Climate-Smart Agriculture and Forestry Grant Program**. This program will provide farms across Northwest Connecticut with resources to enhance agricultural sustainability, increase productivity, and mitigate the effects of climate change. Join the **online information session** on **February 12** or attend the in-person information center on February 14 at the Litchfield Community Center. **Click here** for more information or **email Agricultural Program Manager Shelley Rose to RSVP**.



We Want to Hear From You

Our work is strengthened by your feedback! We invite you to participate in a member survey to help NCLC develop a new strategic plan that will guide our work over the next five years. To fully assess the region's needs, NCLC is seeking feedback from our closest members, volunteers, partners, and advisors, and that means you! Your understanding of NCLC's mission, your knowledge of Northwest Connecticut's natural resources, and your views on how NCLC can serve conservation in the region will be invaluable to the organization as we create our strategic plan for the years ahead.

The survey should only take you about 15 minutes to complete. Please assist us by **clicking here**. Thank you for completing the survey **by Friday, January 26**.

What's on Deck for 2024? New Bridges for Three Public Preserves

We need your help! Extreme weather -- including the **second wettest July** on record -- is taking its toll on our public nature preserves. In the past two years, three footbridges have been washed away during intense rainstorms and the ensuing floods.



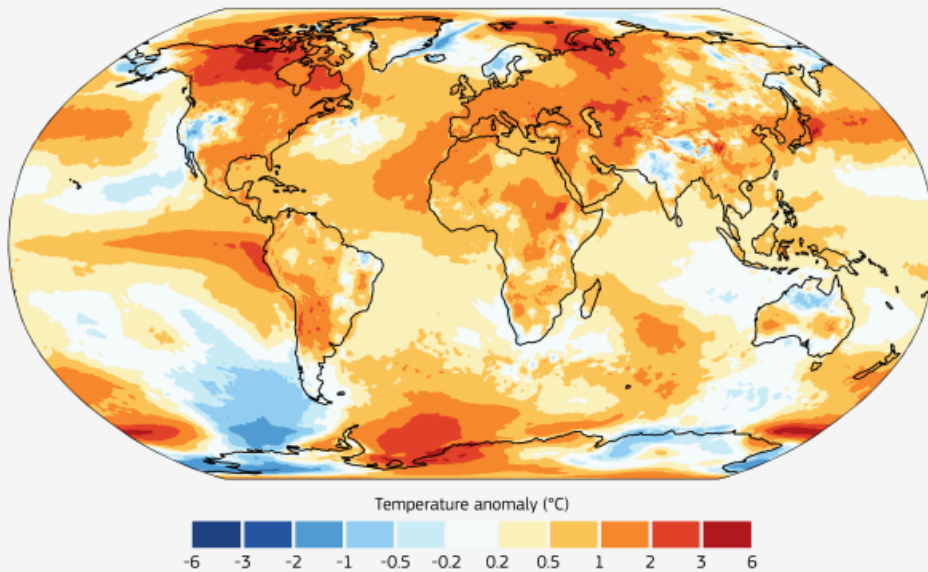
This year, NCLC will replace bridges at preserves in Brookfield and

Sherman with the help of an Iroquois Community Grant. The new bridges are designed to be more resilient in the face of extreme weather. We are excited about the improved hiking experience that all three bridges will offer.

If you are interested in helping to install the bridges, please **contact Public Lands Manager Zach Adams**.

SURFACE AIR TEMPERATURE ANOMALY • 2023

Reference period: 1991–2020 • Data: ERA5 • Credit: C3S/ECMWF



PROGRAMME OF
THE EUROPEAN UNION



Land Conservation Offers Local Solutions to Global Issues

Last month in Dubai, the United Nations held its 28th conference on climate change, known as **COP28**. We were heartened to read this post-conference statement on the United Nations COP28 website:

"Reversing nature-loss can provide upwards of 30 percent of the mitigation action needed to keep 1.5°C within reach by 2030. Nature also has a crucial role to play in reducing climate-related hazards, such as floods and fires. Nature preservation can also contribute a potential USD \$10 trillion worth of new business opportunities and provide almost 400 million new jobs."

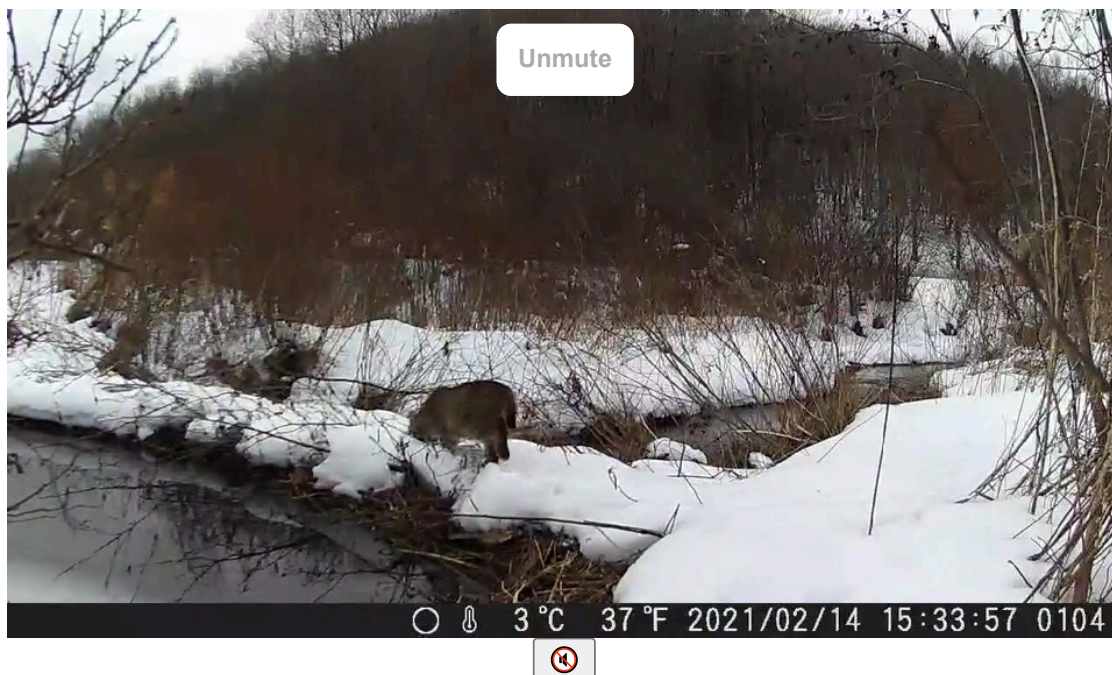
Land conservation not only affects climate change and the economy, it also protects human health. **A report from Highstead**, a regional research organization, indicates that New England's forests remove more than 760,000 tons of air pollution each year, resulting in \$570 million in avoided healthcare costs in our region.

The NCLC team works to accelerate the pace of conservation, reverse nature loss, safeguard biodiversity, and increase the resilience of our natural systems to protect humans. **A profound thank you to our members who support this critical work.**

Become a Member Today

Eyes On The Land

Enjoy one of our favorite shots of a bobcat using the beaver dam at the Cobble Brook Vista Preserve as a bridge. Click below to watch the video.



NCLC is hiring and we hope you will join our team. NCLC welcomes people of all backgrounds, identities, and beliefs to join us in achieving our mission to protect the lands and waters of Northwest Connecticut forever. **To apply for an open position, please visit our [Job Opportunities](#) page.**

Northwest Connecticut Land Conservancy is a nonprofit regional land trust and the largest land trust in the state. As a guardian of natural and working lands, public recreation areas, and drinking water resources, NCLC permanently protects 13,300 acres (and growing) of vast, connected natural areas in Litchfield and northern Fairfield Counties.

[DONATE NOW](#)

[GET INVOLVED](#)

[OUR TRAILS](#)

Northwest Connecticut Land Conservancy

P.O. Box 821, Kent, CT 06757

Phone: 860.927.1927 | Fax: 860.927.1928

info@ctland.org

Northwest Connecticut Land Conservancy | P.O. Box 821, 5 Maple Street, Kent, CT 06757

[Unsubscribe catherine@ctland.org](mailto:catherine@ctland.org)

[Update Profile](#) | [Constant Contact Data Notice](#)

Sent by catherine@ctland.org powered by



Try email marketing for free today!