

SHARE:

[Join Our Email List](#)



Northwest Connecticut
Land Conservancy



PROTECTING LAND AND WATER
FOR PEOPLE, FOR WILDLIFE, FOREVER.

November Newsletter

Dear Catherine,

Last year, NCLC promised to accelerate the pace of conservation -- and this year, we delivered. In 2023, we worked with our partners to secure protection for over **6,300 acres** of land. This extraordinary outcome would not have been possible without your generosity.

From Colebrook in the north to Brookfield in the south, NCLC has been working to save the lands you love. There is more information about a few of these properties below. You will hear updates about them and others in the months and years to come as we continue our work with community members, partner non-profits, and state and regional agencies to raise the

funds necessary to protect these properties permanently and to convert three of the properties into premier public nature preserves.

Now is a good time of year to show your support for this accelerated pace of conservation by **renewing your NCLC membership**. Your continued generosity helps us to continue to protect the land you love.

I hope you will join me in giving thanks to all our partners who work so diligently with us to protect the wild and natural lands and waters for you, for wildlife, forever.

I wish you a warm and bountiful Thanksgiving.

With gratitude,

Catherine

Catherine M. Rawson
Executive Director

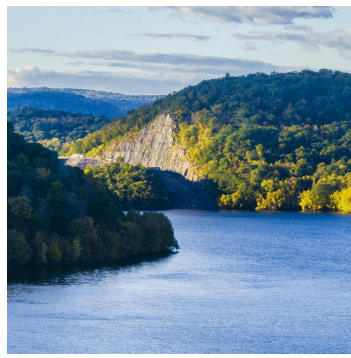


[Renew Your Membership Here](#)

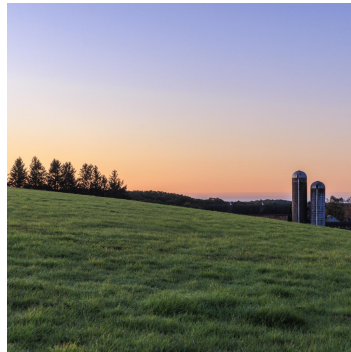
Accelerating the Pace of Conservation

Here are a few of the magnificent properties that NCLC is protecting for you.

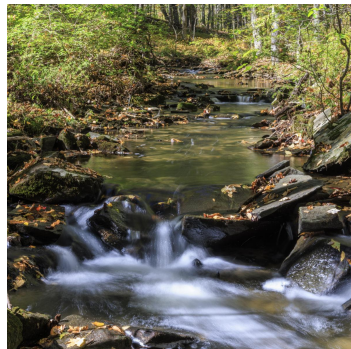
Colebrook Reservoir Preserve, in the north of the region, is a 5,500-acre property owned by The Metropolitan District (MDC), a regional water company. Last spring, MDC sought to abandon a 10-billion-gallon water supply in the Colebrook River Reservoir, which threatened the protected status of these lands. NCLC, with its partner Save the Sound, stepped in to save the pristine forested land with a conservation easement. [Read more.](#)



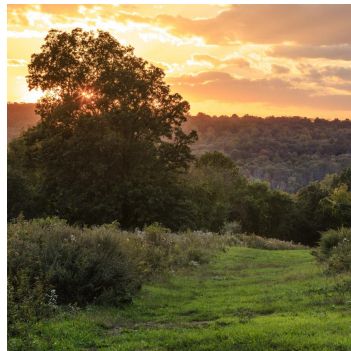
Milde Farm is a 670-acre farm in the center of our region, spanning the towns of Litchfield and Torrington. This is one of the last remaining large family farms in Northwest Connecticut. NCLC has worked with partners and several funders to enter into a contract to purchase and conserve this historic property. [Read more.](#)



The Ledges is a 45-acre future public nature preserve in Brookfield, one of the most densely populated towns in Northwest Connecticut. Less than 9% of Brookfield is currently protected as conservation land. Once protected, The Ledges will connect two town-owned preserves and significantly expand opportunities for public recreation in the community. [Read more.](#)



Glen Brook Preserve is a 117-acre property in Sherman, adjacent to NCLC's Strauss-Morrissey Preserve. The Glen Brook Preserve is a spectacular property which includes core forest, climate resilient habitats, and habitat for rare species. It will also allow NCLC to increase public access through the development of new hiking trails and a parking area. [Read more.](#)



NCLC Welcomes New Director of Stewardship

NCLC is delighted to announce that Maria Grace has joined our team as director of stewardship. Maria is the former executive director of the Sharon Land Trust, a local land trust partner. Maria has also worked for NCLC partner, Housatonic Valley Association as the New York watershed program



manager, building partnerships and running conservation programs within the Ten Mile River watershed. [Read more.](#)

Upcoming Events

Webinar: Conserving Northwest Connecticut

Wednesday, November 15
6 pm - 7 pm

Do you have questions about the future of conservation in Connecticut?

A panel of experts from NCLC and our partners at the **Connecticut Land Conservation Council**, **Housatonic Valley Association**, **Save the Sound**, and **The Nature Conservancy**, will discuss the region's comprehensive conservation report, ***Conserving Northwest Connecticut: Adaptive Strategies for Accelerating the Pace of Conservation.***



[Register Here](#)

Annual Meeting and Holiday Party

Sunday, December 10
3 pm - 5 pm
Kent Community House
Kent, Connecticut

Join NCLC's board, staff, and volunteers for a festive evening celebrating community and conservation at NCLC's

Annual Meeting and Holiday Party. This is a great opportunity to learn more about NCLC's goal to safeguard 30% of Northwest Connecticut's natural lands and waters by 2030!



[Register Here](#)



NCLC is hiring and we hope you will join our team. NCLC welcomes people of all backgrounds, identities, and beliefs to join us in achieving our mission to protect the lands and waters of Northwest Connecticut forever. **To apply for an open position, please visit our [Job Opportunities](#) page.**

Northwest Connecticut Land Conservancy is a nonprofit regional land trust and the largest land trust in the state. As a guardian of natural and working lands, public recreation areas, and drinking water resources, NCLC permanently protects 13,300 acres (and growing) of vast, connected natural areas in Litchfield and northern Fairfield Counties.

[DONATE NOW](#)

[GET INVOLVED](#)

[OUR TRAILS](#)

Northwest Connecticut Land Conservancy

P.O. Box 821, Kent, CT 06757

Phone: 860.927.1927 | Fax: 860.927.1928

info@ctland.org

Northwest Connecticut Land Conservancy | P.O. Box 821, 5 Maple Street, Kent, CT 06757

[Unsubscribe catherine@ctland.org](#)

[Update Profile](#) | [Constant Contact Data Notice](#)

Sent by catherine@ctland.org powered by



Try email marketing for free today!