



Northwest Connecticut
Land Conservancy



PROTECTING LAND AND WATER
FOR PEOPLE, FOR WILDLIFE, FOREVER.

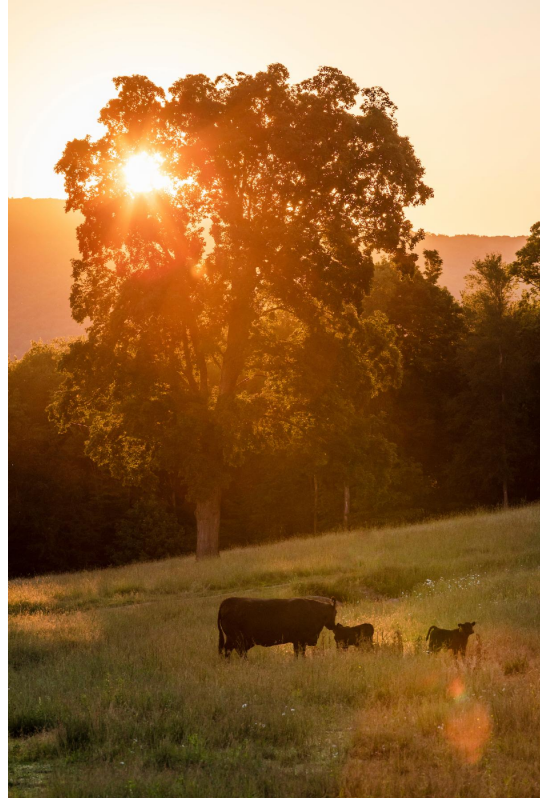
**DONATE
NOW**

September Newsletter

Greetings!

This September marks my 10th Anniversary as Executive Director of NCLC. As I happily look back, I see an organization that, with your support, has increased its impact tremendously.

Over the past ten years, NCLC has grown by 4,000 acres, including 10 public hiking preserves and 10 working farms. In addition, our team of dedicated professionals that acquires new lands, stewards existing lands, and provides public education programs has tripled. **Together, you enable us to connect generations of people to nature and safeguard an extraordinary 12,500 acres of natural and working lands, rivers and streams, and habitat for rare species--forever.**



Each day I feel profoundly grateful for the opportunity to work on your behalf to conserve our region's natural lands. Given the warming climate, this work has never been more needed. All of us at NCLC are inspired to increase the pace of our high-quality conservation work and protect lands and waters, for people, for wildlife, forever. Thank you for making it possible.

In this month's newsletter, I am pleased to share a new video with stories about the public benefits of conservation. In addition, NCLC has several upcoming events that you can read about below. Of particular note, NCLC is honored to co-present this month's Common Ground with Jane Whitney. **The episode, *Climate Change: Sunrise or Sunset?* features an expert panel of speakers, including John Kerry and Bill McKibbin.** I hope you will join us in attendance.

Lastly, I am happy to share a 10-minute member survey. This year NCLC is undertaking strategic planning, and your feedback is essential to that process. Your responses will help inform and guide our conservation programs in the upcoming years.

Thank you again for your support of the land, conservation, and NCLC!

Catherine Rawson
Executive Director



Member Survey

We want to know what you think. Please take this short survey and share your vision for conservation in Northwest Connecticut. Thank you for your leadership!



Special Member Event

NCLC is delighted to co-present this month's **Common Ground with Jane Whitney** featuring Presidential Envoy on Climate, Secretary John Kerry, and internationally renowned environmentalist Bill McKibben. **The event normally costs \$25, but for friends of NCLC it will only cost \$10. To receive your discount, enter promo code NCLC21 and click apply.**



[REGISTER HERE](#)

Upcoming Events



October 2
**Housatonic Heritage Hike
at Macedonia State Park**



October 10
**Grand Opening of New Trails
at the Mallory Preserve**



October 24
**Wildlife Tracking Hike
for Beginners**



November 20
**Virtual
Annual Meeting**

New Video ***Stories from the Land***



We're Hiring: Join the NCLC Team!

We are hiring a Program Administrator. The Program Administrator works with the Executive Director and other staff to support NCLC's administrative, financial, and communication needs. This is an equal opportunity, part-time, non-exempt position located in Kent, CT. **Please click here to read the full job description.** Send inquiries to work@ctland.org.



NCLC staff on a hike at the **Hauser Preserve** in Litchfield.

Northwest Connecticut Land Conservancy is a nonprofit regional land trust and the largest land trust in the state. As a guardian of natural and working lands, public recreation areas, and drinking water resources, NCLC permanently protects 12,500 acres (and growing) of vast, connected

natural areas in Litchfield and northern Fairfield Counties.

DONATE NOW

GET INVOLVED

OUR TRAILS



amazonsmile

Northwest Connecticut Land Conservancy

P.O. Box 821, Kent, CT 06757

Phone: 860.927.1927 | Fax: 860.927.1928

info@ctland.org