



Northwest Connecticut
Land Conservancy



PROTECTING LAND AND WATER
FOR PEOPLE, FOR WILDLIFE, FOREVER.

**DONATE
NOW**

February Newsletter

Greetings!

The challenges of the past year showed us how important nature is for our physical, mental, and emotional health.

The good news is, with your support, **NCLC permanently protected five new conservation properties in 2020.** The new conserved lands, comprising 350 acres, are located in the Towns of Cornwall, Roxbury, Salisbury, and New Milford. In addition, NCLC and the Kent Land Trust are partnering to steward in perpetuity the Iron Mountain Preserve in Kent. You can read more about these projects below.



350 ACRES PROTECTED

As a nonprofit, NCLC's mission is to protect the natural lands and waters of Northwest Connecticut for the benefit of all. But, we could not do this good work without our members and volunteers.

You are an integral part of safeguarding our region's natural resilience. Thank you for making it possible for us to continue to preserve the scenic, natural, and agricultural lands of Litchfield and northern Fairfield Counties.

With gratitude,

Catherine Rawson

Executive Director



Conservation for Your Communities



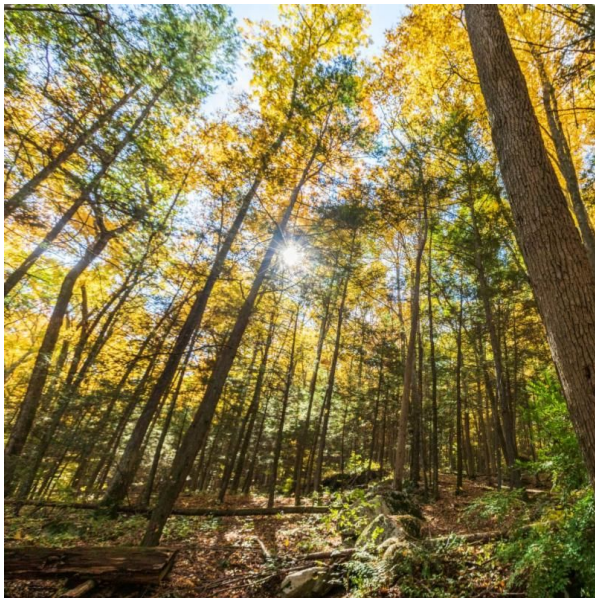
Maple Bank Farm Roxbury, 50 Acres

In July, Maple Bank Farm in Roxbury, owned by Cathleen and Howard Bronson, was permanently protected by the Connecticut Department of Agriculture, with assistance from NCLC. [Read more.](#)



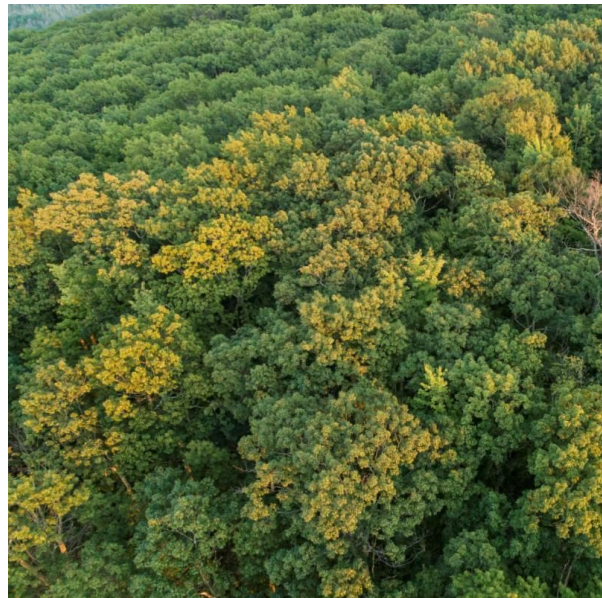
Peterson Easement New Milford, 16 Acres

Guy Peterson's donation of this conservation easement is in honor of his late wife Mary Jane. Guy is a former President of NCLC and this easement is adjacent to other lands that he was instrumental in protecting. [Read more.](#)



Nickoll Preserve Salisbury, 109 Acres

Longtime NCLC members Chrissy Armstrong and Ben Nickoll's donation of forested land expands the protected area in the Moore Brook corridor of Salisbury. [Read more.](#)



Stony Batter Pond Easement West Cornwall, 125 Acres

Hamilton South IV and Manuel Bellod's Stony Batter Farm conservation easement is an important addition to protected lands in the Housatonic River corridor. [Read more.](#)



Osborn Easement Salisbury, 54 Acres

Brothers Nic and Eliot Osborn protected 54 acres of sensitive wetlands, forests, and scenic farm fields on their property.

[Read more.](#)



Iron Mountain Conservation with Kent Land Trust

On January 6, 2021, The Nature Conservancy of Connecticut transferred ownership of the 300+ acre Iron Mountain Preserve to the Kent Land Trust. NCLC will support the permanent conservation of these lands by holding a conservation easement on the property. [Read more.](#)

Upcoming Event



**Trees of Connecticut:
Identification for Beginners**

March 24 at 7 PM

Zoom Event

[Register Here](#)

Because of You



Thank You for Supporting Conservation

NCLC is grateful for the members, volunteers, farmers, conservation easement landowners, and land donors who make conservation possible. Kirsten Peckerman, Margery Feldberg, and Christine Flynn are members of NCLC's Board of Directors. Their leadership and support help to protect the lands and waters of our region. When this photo was taken, they were volunteering their time helping to band juvenile American kestrels, as part of a larger **nesting box project overseen by Art Gingert**. Kestrels are a species of Special Concern in Connecticut and benefit from the conservation work NCLC does as a regional land trust.

Our Sponsors

NCLC thanks and recognizes its foundation and business sponsors for their contributions and in-kind support in 2020. Healthy environments support healthy communities. Thank you for your commitment to preserving the treasured landscapes of Northwest Connecticut.

Foundations

Anne and Rollin Bates Foundation
Connecticut Community Foundation
Connecticut Trust For Historic Preservation
Ellen Knowles Harcourt Foundation
Northwest Connecticut Community Foundation
The Peter and Carmen Lucia Buck Foundation

Corporate Sponsors

Andy's Roofing	Klemm Real Estate
Aquarion Water Company	Linde
Arthur H. Howland, P.C.	Litchfield County Pools
Ethan Allan Global, Inc.	Mark J. Capecelatro, LLC
GeronNursing & Respite Care, Inc.	Matthews Group
Iroquois Gas Transmission System	Real Estate
J. Seitz & Co.	Pergola Home
J.S. Wilcox Plumbing & Heating	Starbuck Inn
James Barron Art	Stuart Family Farm

Kelly Law Offices
Kent Wine & Spirit
Kimberly-Clark Corporation

Union Savings Bank
William Pitt Sotheby's Real Estate
YardScapes

BECOME A SPONSOR

Northwest Connecticut Land Conservancy is a nonprofit regional land trust and the largest land trust in the state. As a guardian of natural and working lands, public recreation areas, and drinking water resources, NCLC permanently protects 12,500 acres (and growing) of vast, connected natural areas in Litchfield and northern Fairfield Counties.

DONATE NOW

GET INVOLVED

OUR TRAILS



amazonsmile

Northwest Connecticut Land Conservancy

P.O. Box 821, Kent, CT 06757

Phone: 860.927.1927 | Fax: 860.927.1928

info@ctland.org