

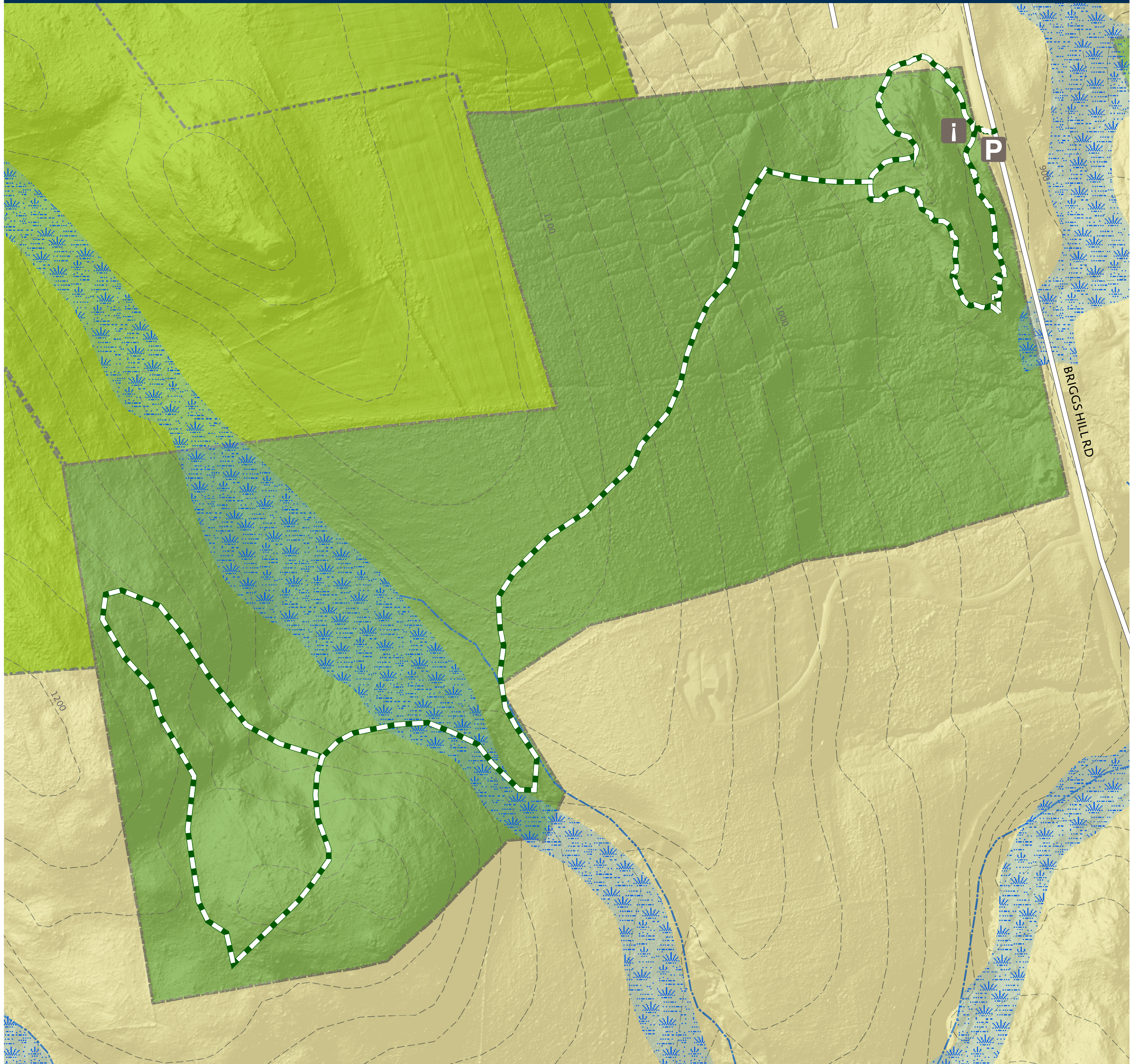


Northwest Connecticut
Land Conservancy

PROTECTING LAND AND WATER FOR PEOPLE, FOR WILDLIFE, FOREVER.

WEST BRIGGS HILL PRESERVE

23 Briggs Hill Road, Sherman, CT



NCLC hiking trails are open from sunrise to sunset | Carry in, carry out | Dogs must remain on a leash | Motorized vehicles are not permitted
Please remain on the trails to protect flora, fauna, and neighboring properties | Recreational use of our hiking trails is carried out at your own risk

Green-White Trail - 1.46 miles
Difficulty Level: Moderate

P Parking
i Kiosk

West Briggs Hill Preserve
 Other NCLC Lands
 Green-White Trail

Rivers and Streams
 Wetlands

Legend

0 0.05 0.1 0.2 Miles

