

DONATE NOW



Northwest Connecticut Land Conservancy

PROTECTING LAND AND WATER FOR PEOPLE, FOR WILDLIFE, FOREVER.

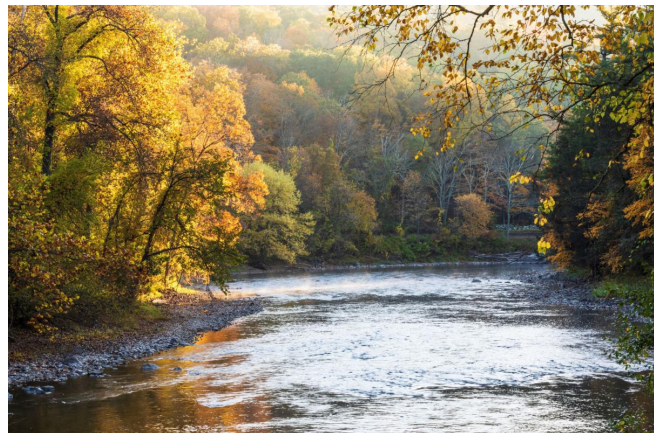


OCTOBER NEWSLETTER

Greetings!

This year marks our 55th Anniversary of conserving Northwest Connecticut's irreplaceable lands and waters.

Despite the challenges 2020 has posed for us all, I am heartened by the continuing support of our members. Year after year you have shown us just how much you value conservation and for that we are truly grateful.



Due to COVID-19 we continue to postpone in-person events. This includes our Fall Celebration at the Smyrski Farm and the Annual Picnic in Sherman, previously held by Naromi Land Trust. While we would greatly prefer to be together in person and look forward to holding these events again next year, there are exciting opportunities to engage with us virtually. I hope you will join us at one of our upcoming events highlighted below.

The work of saving the land you love continues just as strongly during the pandemic as before.

This is revealed, in part, by our featured story this month on the conservation of Maple Bank Farm in Roxbury. NCLC protects on average seven conservation properties a year. Each acquisition has its own distinct story, often years in the making. Thanks to your support, Maple Bank Farm is the fourth farm that NCLC has helped to permanently protect through its partnership with the State of Connecticut's Department of Agriculture and the 35th working farm NCLC has protected since its founding in 1965.

Lastly, this month, like many land trusts across the country, we recognized Indigenous Peoples' Day on Monday, October 12th. Here in Connecticut, we are in the traditional territory of the Mohegan, Paugussett, Mashantucket Pequot, Wappinger, Wepawaug, Eastern Pequot, and Schaghticoke Tribes. Connecticut is also home to people with tribal affiliations other than those listed. NCLC will continue to recognize and acknowledge those who cared for these lands first. I encourage you to spend some time

getting to know their cultures and the history of the lands you live on, hike on, and enjoy. A great first step is learning about the Indigenous peoples of Connecticut. For more information, I recommend exploring the materials of the [Connecticut State Library](#) and [this interactive map of native land](#).

With gratitude,

Catherine

Catherine M. Rawson
Executive Director



Maple Bank Farm in Roxbury — Eighth Generation Family Farm Protected Forever

Five years ago, NCLC approached Cathy and Howie Bronson, owners of Roxbury's Maple Bank Farm and the eighth generation of Cathy's family to work the land, about permanently protecting their treasured farm through the Connecticut Department of Agriculture's Farmland Preservation Program.

NCLC supported Cathy and Howie in the conservation process, from completing the initial application to aiding in the State and Federal acquisition process and commissioning surveys and soil reports. This summer saw all our efforts come to fruition. The farm was permanently protected on July 29, 2020. The conservation easement on over 50 acres of the eighth-generation farm was purchased using a combination of State and Federal funds. This ensures the farm will remain an agricultural property and cannot be sold for development. [Click here to read our full press release.](#)

Due to COVID-19, a town-wide celebration of the conservation of Maple Bank Farm was not possible. But, we would still like to enable everyone to thank Cathy and Howie for their commitment to community and conservation. We invite you to share your words of thanks and favorite memories from the farm as video messages. These will be shared with Cathy and Howie and the community at large. To record your message, [click here](#). Thank you!

UPCOMING EVENTS



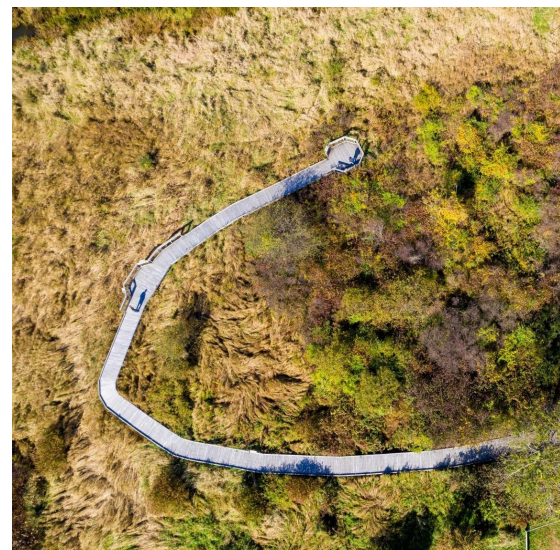
Virtual Land Tour Part 2: Public Preserves Beyond Sherman
October 22



Live Reptiles Presented by Christine's Critters
November 7



NCLC Annual Meeting
November 14

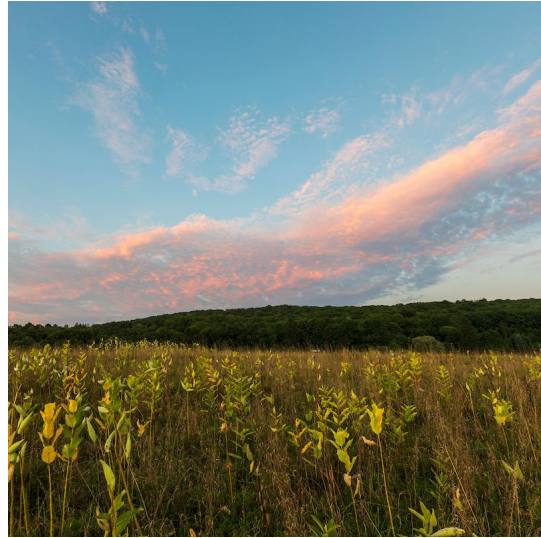


Virtual Land Tour Part 1: Introducing NCLC's Sherman Preserves
Video Recording

HELP SAVE THE LANDS YOU LOVE

You Make Regional Conservation Possible

Natural and working lands sustain our communities and enrich our lives. Despite the challenges that 2020 presented, the work of conserving these lands continues just as strongly. I know some of you cannot support our work this year. For those who can, **your gift** is essential to helping NCLC reach its \$180,000 year-end fundraising goal. **Click here and save the land you love today.**



FROM THE FIELD



Hunt Hill Added to the New Milford Barn Quilt Trail

The New Milford Barn Quilt Trail, the only barn quilt trail in Connecticut, was created by the New Milford Forest and Farmland Preservation Committee to honor the agricultural history of New Milford, the American folk art tradition of quilt-making, and encourage the growing interest in local farms and local food. **Read more.**



Wear Orange: Safe Hiking During Hunting Season

Did you know it's hunting season in Connecticut? The peak hunting season is October through December. You don't need to stop enjoying your favorite trails. Wear orange, keep your dog leashed, and avoid hiking at dawn and dusk. **Click here for more tips.**

Founded in 1965, **Northwest Connecticut Land Conservancy** is the state's largest land trust. As a guardian of natural and working lands, public recreation areas, and drinking water resources, NCLC permanently protects 12,000 acres (and growing) of vast, connected natural areas in Litchfield and northern Fairfield Counties.



[DONATE NOW](#)

