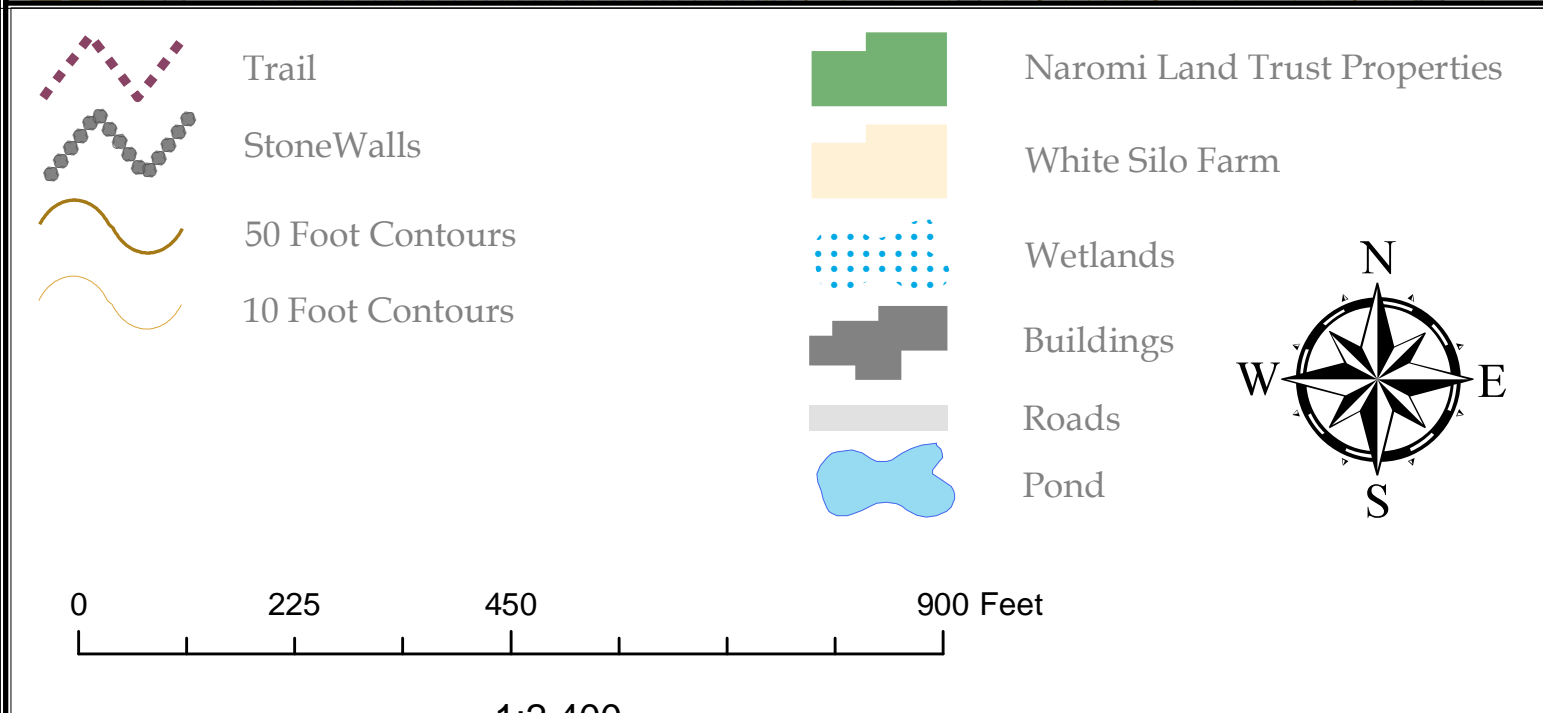
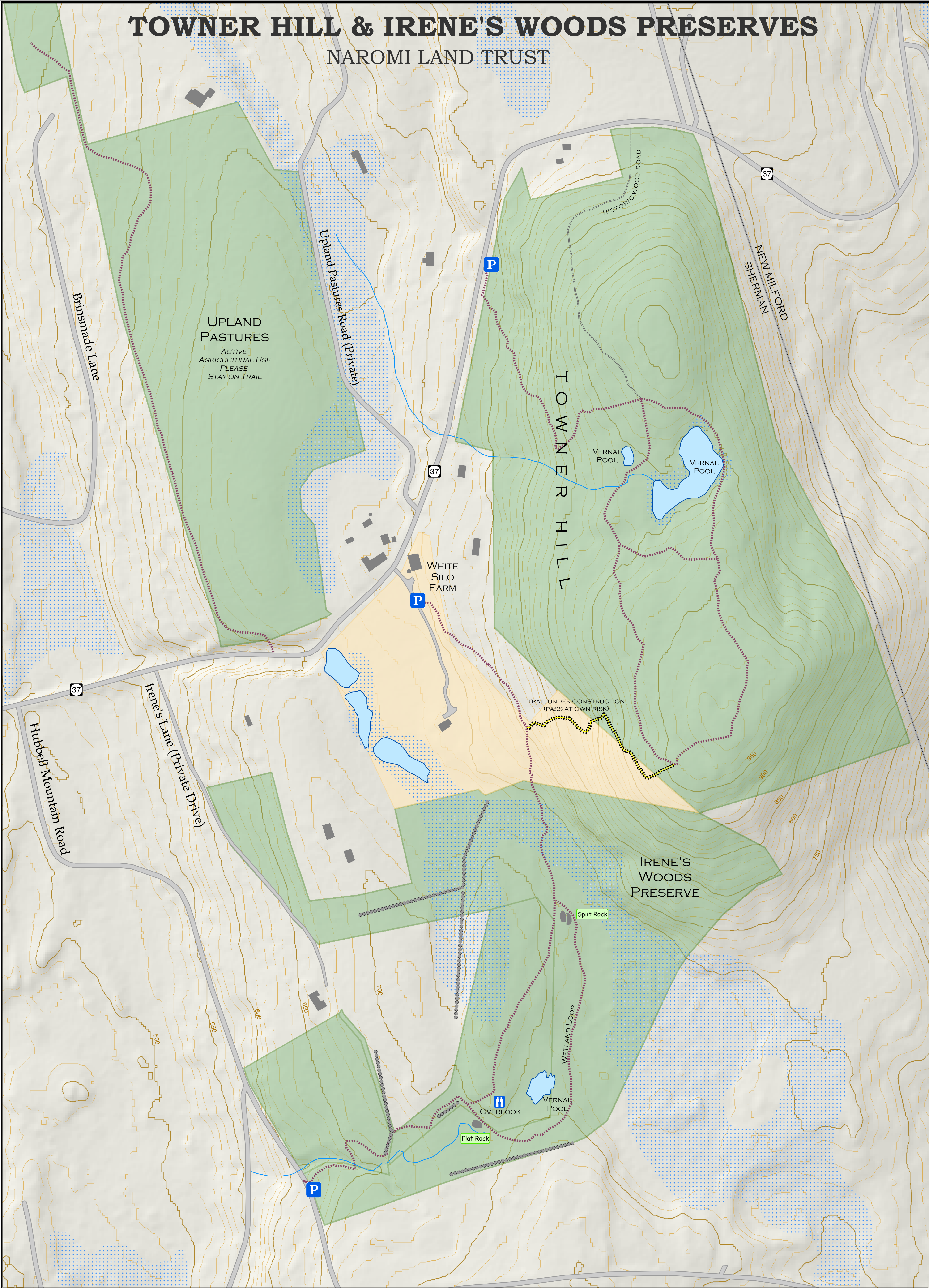


# TOWNER HILL & IRENE'S WOODS PRESERVES

NAROMI LAND TRUST



**Trail Description:**  
Varied woodland trail through moderate terrain. Highlights include vernal pool, rock outcrops, and small scenic overlook.

**Trail Length:**  
- 1300 Feet (0.25 miles) to Flat Rock & Overlook  
- 2200 Feet (0.40 miles) to Split Rock  
- 4100 Feet (0.78 miles) to Route 37

**Naromi Land Trust**  
PO Box 265, Sherman, CT 06784

**NCD**  
Northwest Conservation District

**LEAF**  
Troquels Land Enhancement & Acquisition Fund

This map does not represent an accurate survey. It is intended for planning purposes only. Map revised October 2012. file: ntm.irenes\_102312.pdf

**Preserve Policies**  
Preserve Open Sunrise to Sunset  
No Motorized Vehicles  
No Overnight Parking  
No Hunting  
No Camping  
Please Keep Dogs on a Leash  
Please Respect Private Property  
Please Stay on Trails

**Contact for more information or to report a problem:**  
(860) 354-0260  
Info@naromi.org  
www.naromi.org