

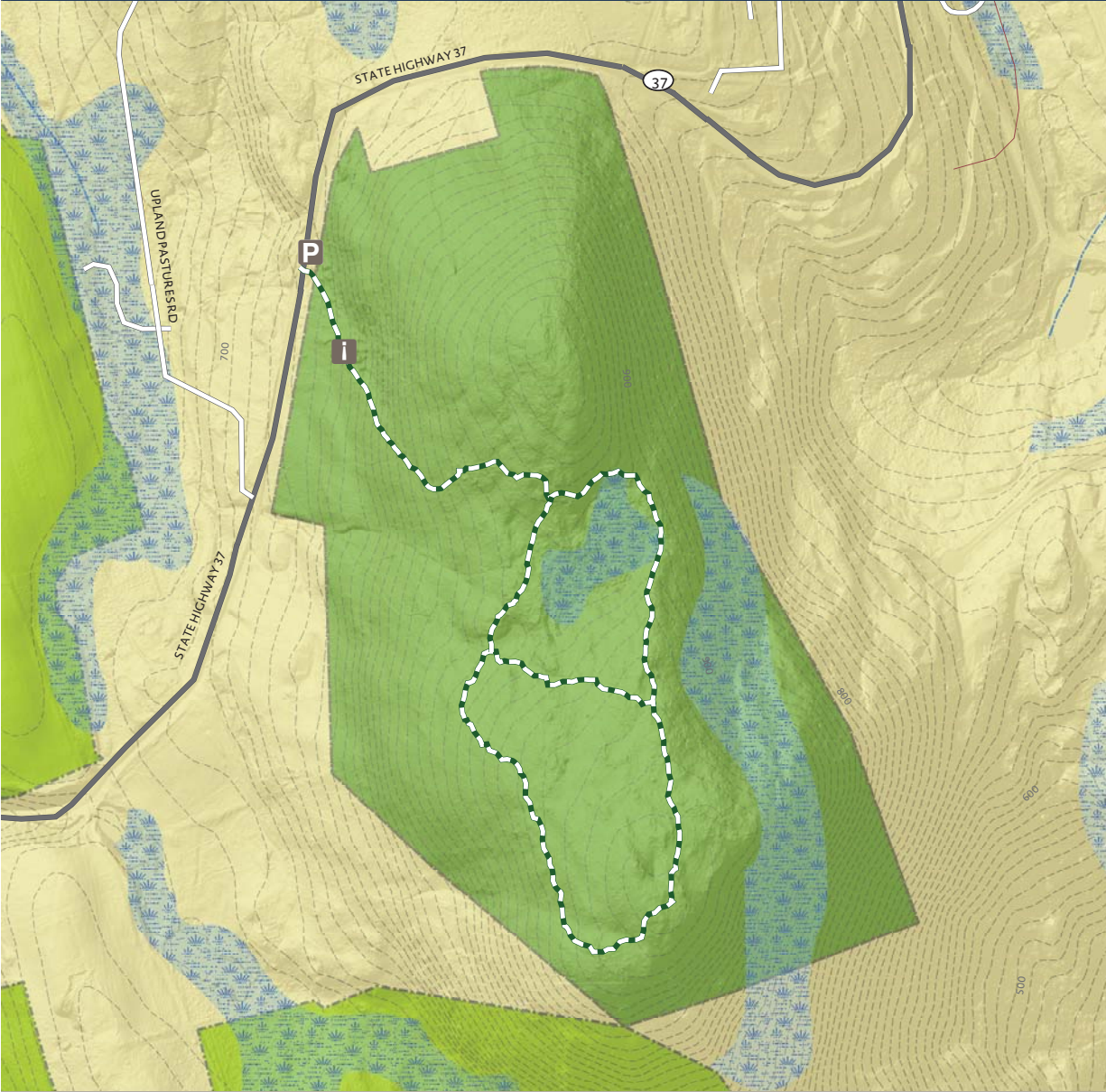


Northwest Connecticut  
Land Conservancy

PROTECTING LAND AND WATER FOR PEOPLE, FOR WILDLIFE, FOREVER.

# TOWNER HILL PRESERVE

46 Route 37 East, Sherman, CT



NCLC hiking trails are open from sunrise to sunset | Carry in, carry out | Dogs must remain on a leash | Motorized vehicles are not permitted  
Please remain on the trails to protect flora, fauna, and neighboring properties | Recreational use of our hiking trails is carried out at your own risk

Green-White Trail - 1.08 miles  
Difficulty Level: Moderate

### Legend

- Towner Hill Preserve
- Other NCLC Lands
- P Parking
- i Kiosk
- Green-White Trail
- Wetlands
- Rivers and Streams
- 10' Contour

