

DONATE NOW



Northwest Connecticut Land Conservancy

PROTECTING LAND AND WATER FOR PEOPLE, FOR WILDLIFE, FOREVER.



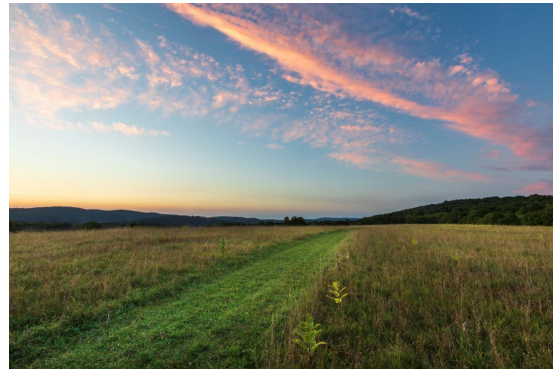
SEPTEMBER NEWSLETTER

Greetings!

This is a momentous time for our organization.

As many of you know, on June 30th Weantinoge changed its name to **Northwest Connecticut Land Conservancy (NCLC)** and merged with Naromi Land Trust of Sherman.

Land trust partnerships, such as the one created by Weantinoge and Naromi, help to increase the pace, quality, and permanence of conservation. **Together, as NCLC, we are Connecticut's largest land trust, protecting an extraordinary 12,000 acres of natural lands and waters, for people, for wildlife, forever.** It is a conservation legacy you make possible. You can read more about our programs, merger with Naromi, and contact the NCLC staff at our [new website](#).



Natural lands sustain our communities and enrich our lives. And, the work of conserving these lands continues just as strongly during a pandemic as before. Summer and fall are the seasons for preserve maintenance, and that work is the theme of this newsletter. As you will read below, NCLC's staff and 25 dedicated volunteers quickly responded to Tropical Storm Isaias. Two summer interns stewarded our public hiking trails and provided services to our partners at Flanders Nature Center, Goshen Land Trust, and Lake Waramaug Task Force. And, thanks to grants from the Connecticut Community Foundation, Linde, and the Iroquois Community Foundation, capital improvements were made to four public nature preserves.

Although we continue to postpone in-person events, I hope you will join us for one of our upcoming virtual programs, including a tour of NCLC trails in Sherman on **Thursday, September 24 at 6 PM** and a tour of NCLC trails outside of Sherman on **Thursday, October 22 at 6 PM**. It would be terrific to see you there.

The land you save is here for you today, tomorrow, and for the years to come. Thank you so much.

With gratitude,

Catherine

Catherine M. Rawson
Executive Director



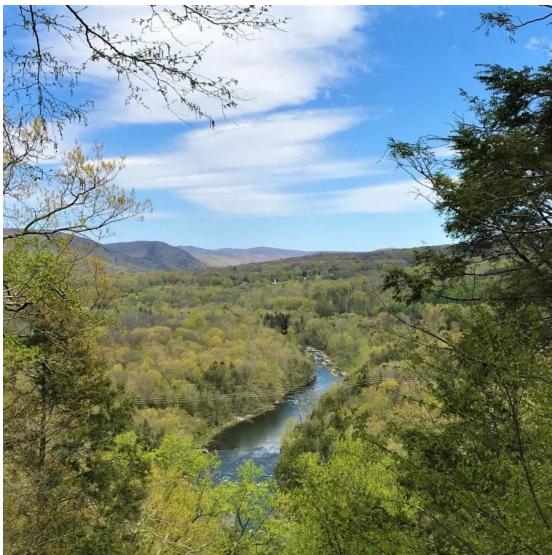
WELCOMING AMANDA BRANSON

Amanda Branson is the director of operations and finance at Northwest Connecticut Land Conservancy where she oversees business operations and planning, as well as the partnership program. Amanda was formerly the executive director of Naromi Land Trust in Sherman, CT. As Naromi's first executive director, Amanda led the organization through accreditation in 2018 and the 2020 merger with Weantinoge Heritage Land Trust.

Amanda is co-chair of Connecticut Land Conservation Council's (CLCC) Accredited Land Trusts working group and chair of the governance sub-committee, co-chair of SALT (Small Area Land Trusts), and a member of the CLCC conference planning committee. Previously Amanda led the CT Records Project, a joint program of CLCC and the Land Trust Alliance and was a program associate at Rivers Alliance of Connecticut helping advocate for the state's waters and to organize conferences on hydropower and recreational liability.



UPCOMING EVENTS



**Virtual Preserve Tour Part 1: Introducing
Sherman's Preserves**
September 24



**Virtual Land Tour Part 2: NCLC
Preserves Beyond Sherman**
October 22

THANK YOU SUMMER INTERNS



Caroline Hilli, Partnership Intern

Caroline graduated from the University of Vermont in 2018 with a degree in environmental studies. Caroline is dividing her time between NCLC, Flanders Nature Center, Goshen Land Trust, and Lake Waramaug Task Force (LWTF). From mapping and monitoring protected lands, to trail maintenance, to working with zooplankton with LWTF, Caroline is gaining hands-on experience across different areas of conservation work. [Read more.](#)



Noah Wistman, Sherman Trails Intern

In 2019 Noah interned with Naromi Land Trust and returned this year as an NCLC intern for the Sherman preserves. Noah, a student at Hunter College, was often joined by his father and NCLC volunteer Jim Wistman, and NokahMocha the dog. Noah worked on over 20 miles of hilly ridgeline trails this summer and worked to open a new trail.

[Read more.](#)

FROM THE FIELD



Bridge Repair at Brookfield's Kahlo Preserve

The Kahlo Preserve was heavily damaged by the 2018 macroburst. Funding from Linde helped clear the remaining hazardous trees and carpentry skills



Banding Kestrels at Hauser Nature Preserve

Litchfield's [Hauser Nature Preserve](#) is home to one of five American Kestrel [nesting boxes](#) on NCLC lands that are monitored by volunteer Art

from NCLC's own Matt Soper mean this trail is now open! The Kahlo Preserve trailhead is at 10 Hop Brook Road in Brookfield and is marked by a BOSLI kiosk. Park along the shoulder of the road.

[Read more.](#)

Gingert. This year we are thrilled that a nesting pair has returned to Hauser for the second year in a row. Art Gingert was joined by Debbie and Rich Martin and they banded three, healthy, feisty kestrel hatchlings. Special thanks to Rich Martin for the photos. [Read more.](#)



Trail Improvements at Three Preserves

NCLC, with the support of a \$10,000 Iroquois Community Project Grant and the generous donation of \$2,000 of labor and materials from Yardapes, has been working to improve the hiker experience at three of our public preserves, including this new parking area for the James Morrissey Family Nature-Strauss Preserve at 130 Gaylord Road in Gaylordsville. [Read More.](#)



Volunteers Respond to Isaias

After Tropical Storm Isaias we were able to check 30+ miles of hiking trails thanks to our incredible volunteers. The 25 volunteers who responded to a call for assistance visited 21 NCLC trail preserves and provided detailed reports and pictures to staff. In many cases, volunteers made multiple visits and worked to open trails themselves, which helped our stewardship staff efficiently respond to the areas of highest need first. [Read More.](#)

FOLLOW US ONLINE

Keep the Conversation Going

Follow NCLC online for conservation updates, news and events, and more. We're on [Facebook](#) and [Instagram](#).

If you're out on the trails, tag us @nwctconservancy so we can see how you #loveyourctlandtrust.



Founded in 1965, [Northwest Connecticut Land Conservancy](#) is the state's largest land trust. As a guardian of natural and working lands, public recreation areas, and drinking water resources, NCLC permanently protects 12,000 acres (and growing) of vast, connected natural areas

in Litchfield and northern Fairfield Counties.

[DONATE NOW](#)

