

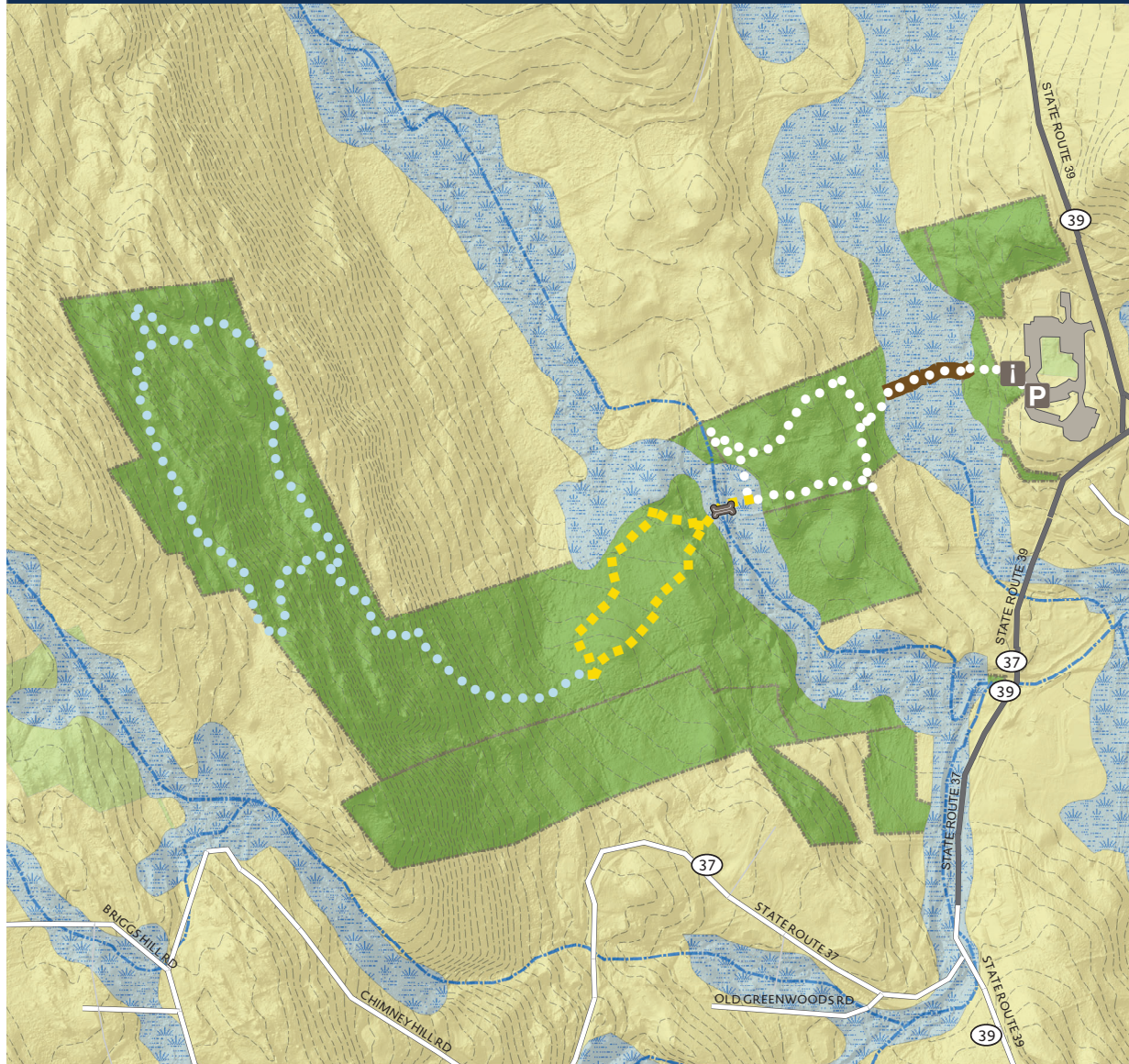


Northwest Connecticut
Land Conservancy

PROTECTING LAND AND WATER FOR PEOPLE, FOR WILDLIFE, FOREVER.

MALLORY PRESERVE

Sherman Town Center, Sherman, CT



NCLC hiking trails are open from sunrise to sunset | Carry in, carry out | Dogs must remain on a leash | Motorized vehicles are not permitted
Please remain on the trails to protect flora, fauna, and neighboring properties | Recreational use of our hiking trails is carried out at your own risk

White Circle Trail - 0.78 miles
Difficulty Level: Easy

Yellow Square Trail - 0.50 miles
Difficulty Level: Moderate

Light Blue Circle Trail - 1.75 miles
Difficulty Level: Strenuous

Legend

Mallory Preserve

P Parking

White Circles

i Kiosk

Yellow Square

Town Center Parking Lot

Bridge

Light Blue Circles

Boardwalks

Wetlands

10' Contour

0 0.125 0.25 0.5 Miles

