

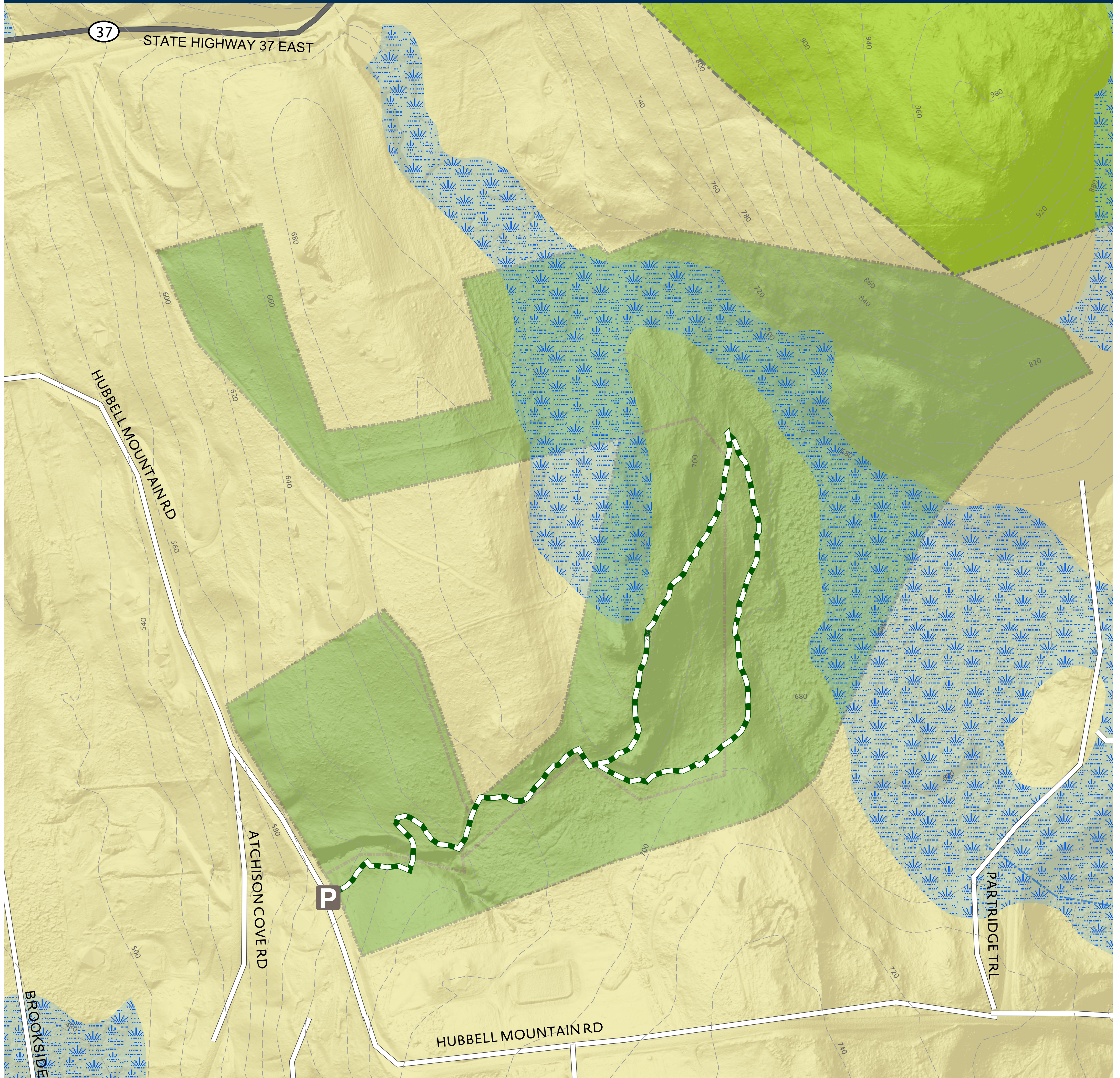


Northwest Connecticut
Land Conservancy

PROTECTING LAND AND WATER FOR PEOPLE, FOR WILDLIFE, FOREVER.

IRENE'S WOODS PRESERVE

32 Hubbell Mountain Road, Sherman, CT



NCLC hiking trails are open from sunrise to sunset | Carry in, carry out | Dogs must remain on a leash | Motorized vehicles are not permitted
Please remain on the trails to protect flora, fauna, and neighboring properties | Recreational use of our hiking trails is carried out at your own risk

Green-White Trail - 0.68 miles
Difficulty Level: Easy

Legend

- Parking
- Green-White Trail
- Wetlands
- Rivers and Streams
- Irene's Woods Preserve
- Other NCLC Lands
- 20' Contours

0 0.05 0.1 0.2 Miles

