

SHARE:

[Join Our Email List](#)

DONATE NOW

**WEANTINOGE**
HERITAGE LAND TRUST

MAY NEWSLETTER

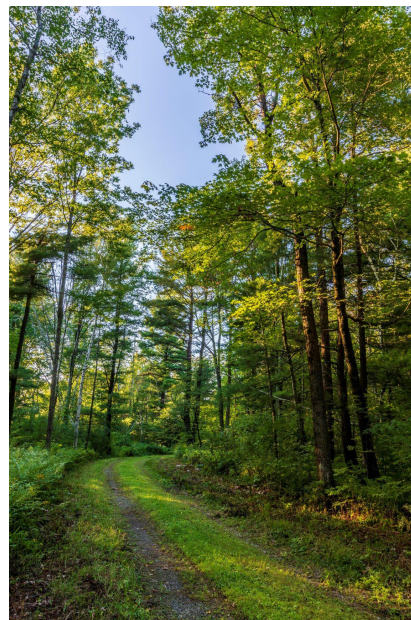
Greetings!

This May, Weantinoge is going virtual. We have planned four online events to help keep you entertained and connected.

First up, Director of Land Conservation, Paul Elconin, will lead a tour of Weantinoge's public hiking preserves. Like many land trusts, we are seeing increased use of our natural lands for hiking and other forms of recreation. **All of Weantinoge's preserves are open** and allow for socially-distanced activities.

Please join us this **Thursday, May 7 at 7 PM** to learn more about Weantinoge's hiking preserves and how you can access them too. To register, click [here](#).

The lands you have saved are serving your communities well in this particularly challenging



time. Especially now, open spaces are more important than ever. Thank you for your ongoing support and partnership of our work.

With gratitude,

Catherine

Catherine Rawson
Executive Director



UPCOMING EVENTS



**Virtual Tour of Weantinoge's
Hiking Preserves
May 7**



**Fierce, Feathered Friends. Live Birds
of Prey Presented by Christine's
Critters
May 13**



**The Changing Climate
May 19**



**Bobcats in Connecticut
May 21**

Weantinoge Heritage Land Trust is Northwest Connecticut's regional land trust and the largest land trust in the state. As a guardian of natural and working lands, public recreation areas, and drinking water resources, Weantinoge permanently protects 10,500 acres (and growing) of vast, connected natural areas in Litchfield and northern Fairfield Counties.

DONATE NOW

