

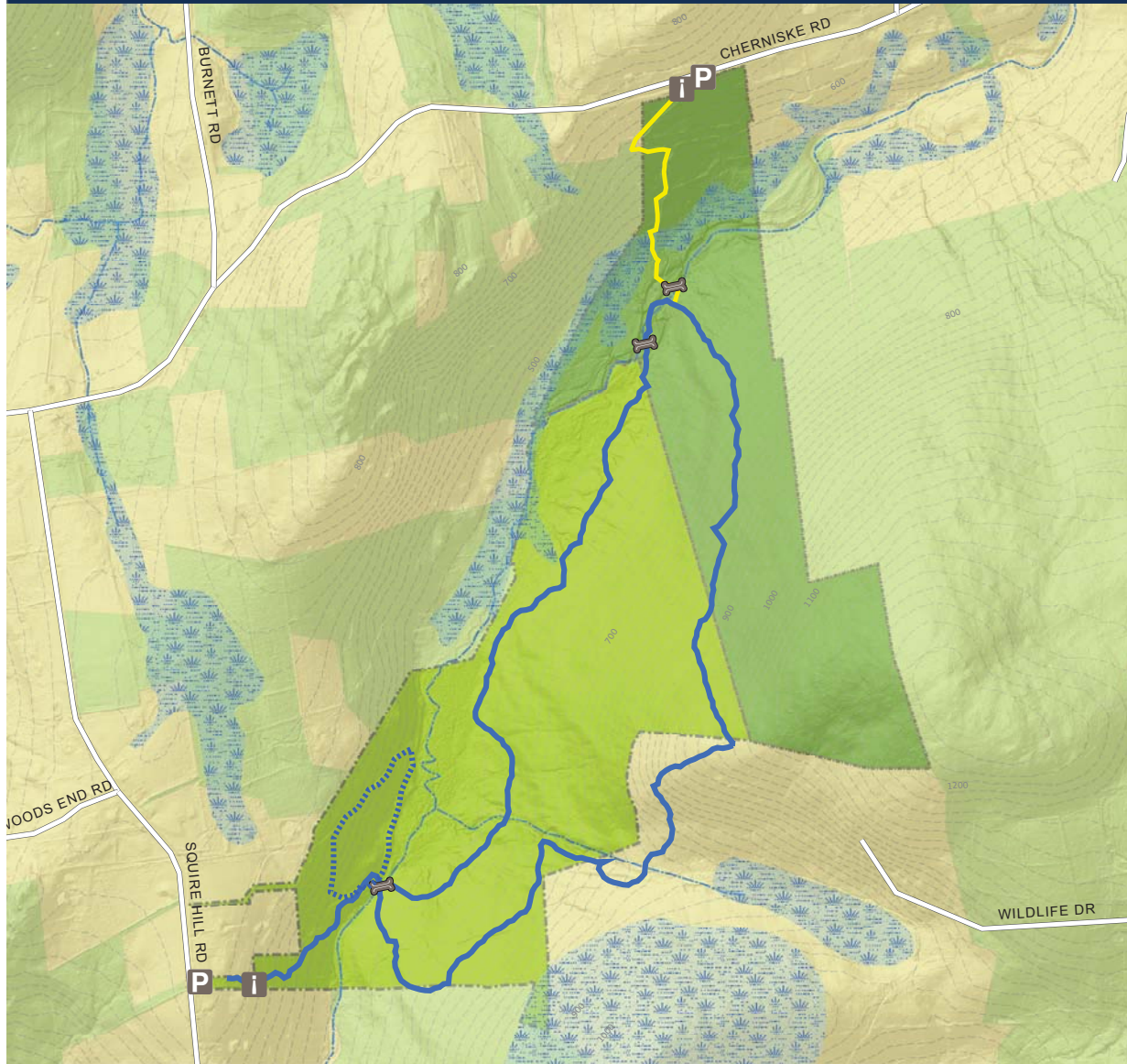


Northwest Connecticut  
Land Conservancy

PROTECTING LAND AND WATER FOR PEOPLE, FOR WILDLIFE, FOREVER.

# KAHN & NOSTRAND PRESERVES

58 Cherniske Road, New Milford, CT  
56 Squire Hill Road, New Milford, CT



NCLC hiking trails are open from sunrise to sunset | Carry in, carry out | Dogs must remain on a leash | Motorized vehicles are not permitted  
Please remain on the trails to protect flora, fauna, and neighboring properties | Recreational use of our hiking trails is carried out at your own risk

- Blue Trail - 3.3 miles  
Difficulty Level: Strenuous
- Beaver Pond Loop - 0.5 miles  
Difficulty Level: Moderate
- Yellow Trail - 0.4 miles  
Difficulty Level: Moderate

- P** Parking
- i** Kiosk
- Bridge

- Kahn Preserve
- Nostrand Preserve
- Town of New Milford
- Other NCLC Lands
- Wetlands

- Yellow Trail
- Blue Trail
- Beaver Pond Loop
- Rivers and Streams
- 20' Contour

