

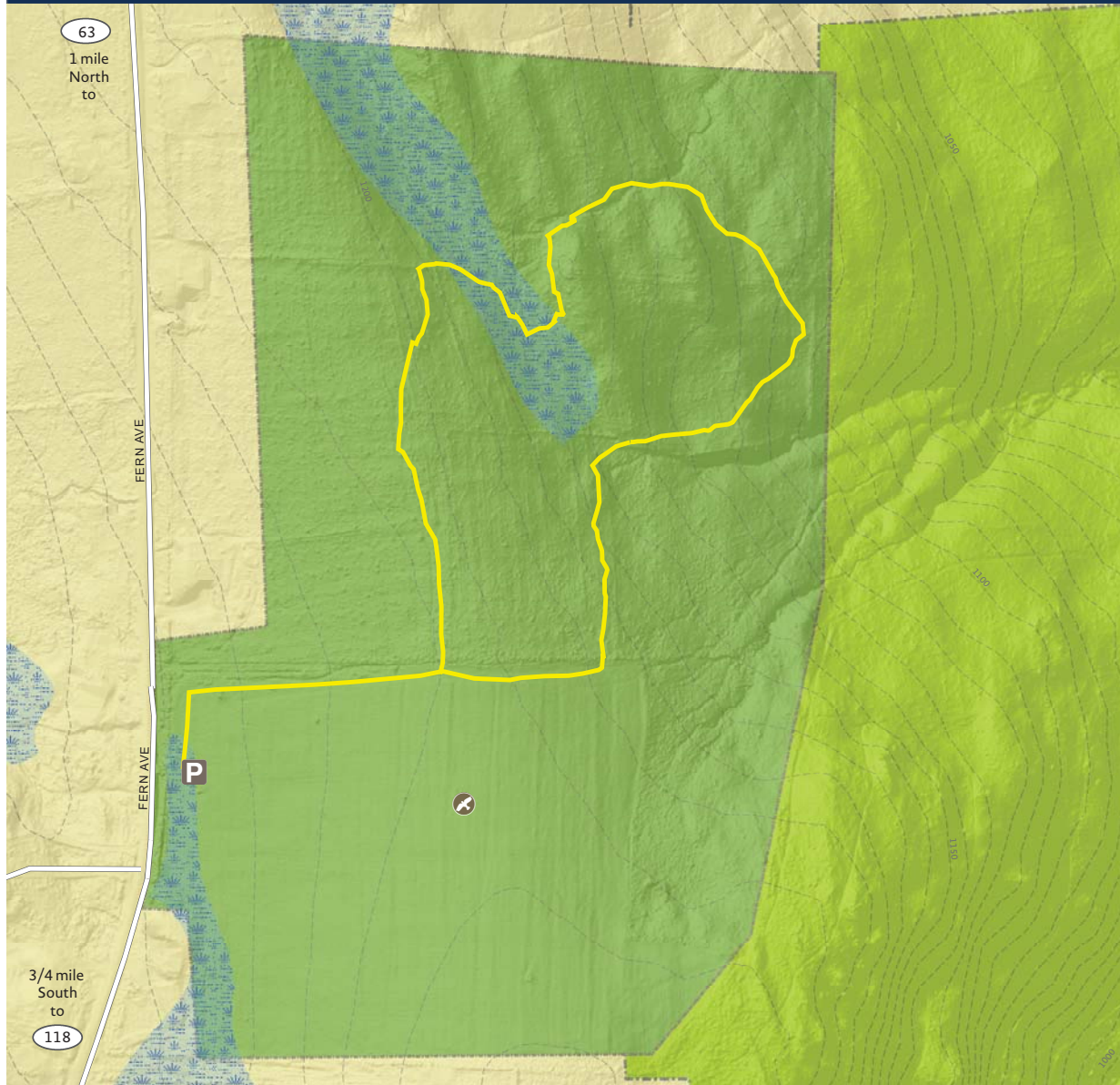


Northwest Connecticut
Land Conservancy

PROTECTING LAND AND WATER FOR PEOPLE, FOR WILDLIFE, FOREVER.

HAUSER NATURE PRESERVE

100 Fern Avenue, Litchfield, CT



NCLC hiking trails are open from sunrise to sunset | Carry in, carry out | Dogs must remain on a leash | No unauthorized vehicles
Please remain on the trails to protect flora, fauna, and neighboring properties | Recreational use of our hiking trails is carried out at your own risk

Yellow Trail - 0.8 miles
Difficulty Level: Easy



Parking



Kestrel Box



Hauser Nature Preserve



Topsmead State Forest

Legend

Yellow Trail

Rivers and Streams

Wetlands

20' Contour

