

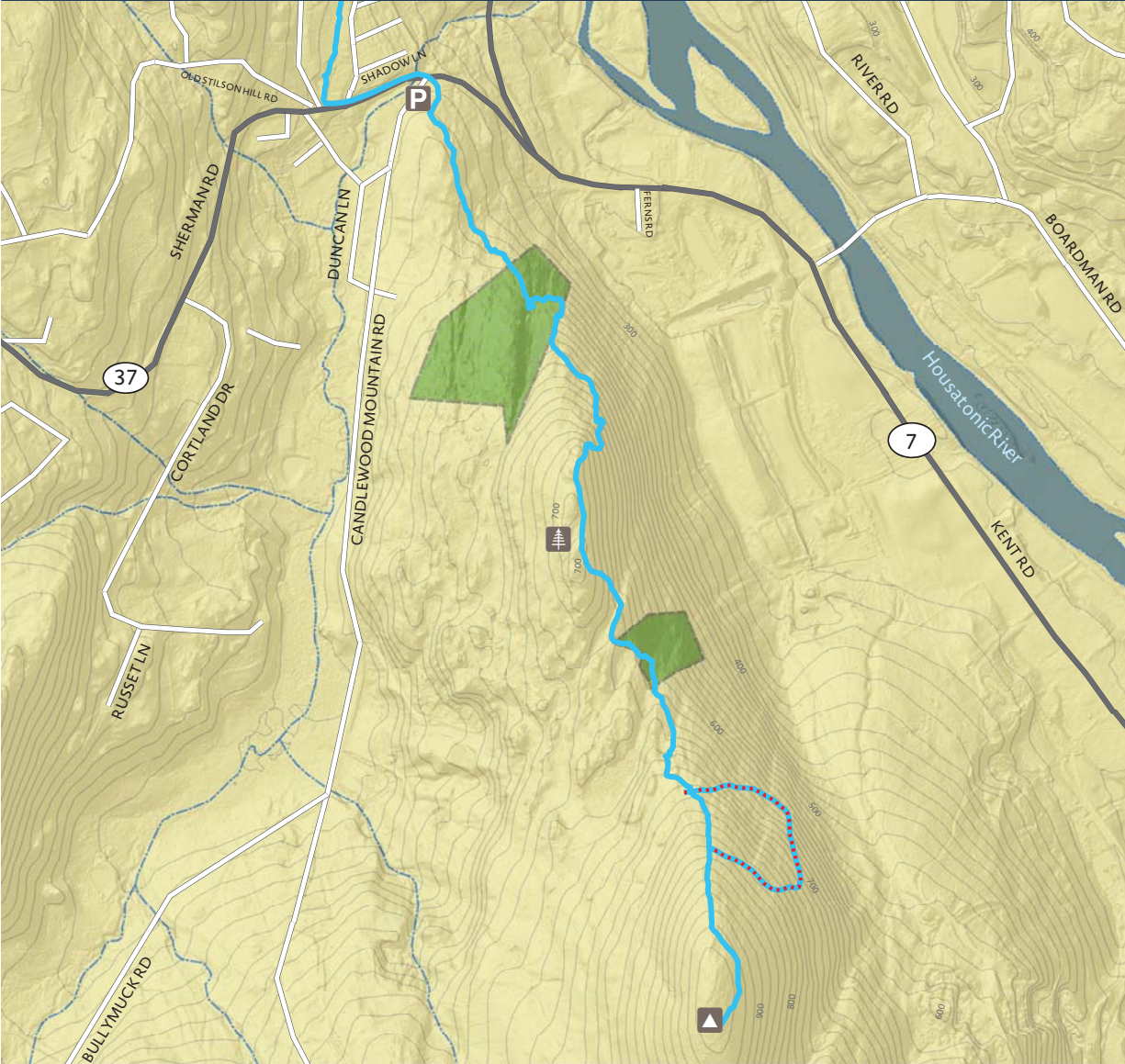


**Northwest Connecticut
Land Conservancy**

PROTECTING LAND AND WATER FOR PEOPLE, FOR WILDLIFE, FOREVER.

CANDLEWOOD MOUNTAIN

13 Sherman Road, New Milford, CT



NCLC hiking trails are open from sunrise to sunset | Carry in, carry out | Dogs must remain on a leash | Motorized vehicles are not permitted
Please remain on the trails to protect flora, fauna, and neighboring properties | Recreational use of our hiking trails is carried out at your own risk

Legend

Blue Trail - 1.3 miles
Difficulty Level: Moderate

Blue - Red Trail - 0.3 miles
Difficulty Level: Moderate

- Parking
- Pine Knob
- Summit Candlewood Mt (960 ft)
- Candlewood Mountain Preserve
- Other NCLC Lands

Housatonic Range Trails

- CFPA Blue
- Blue/Red
- Rivers and Streams

