

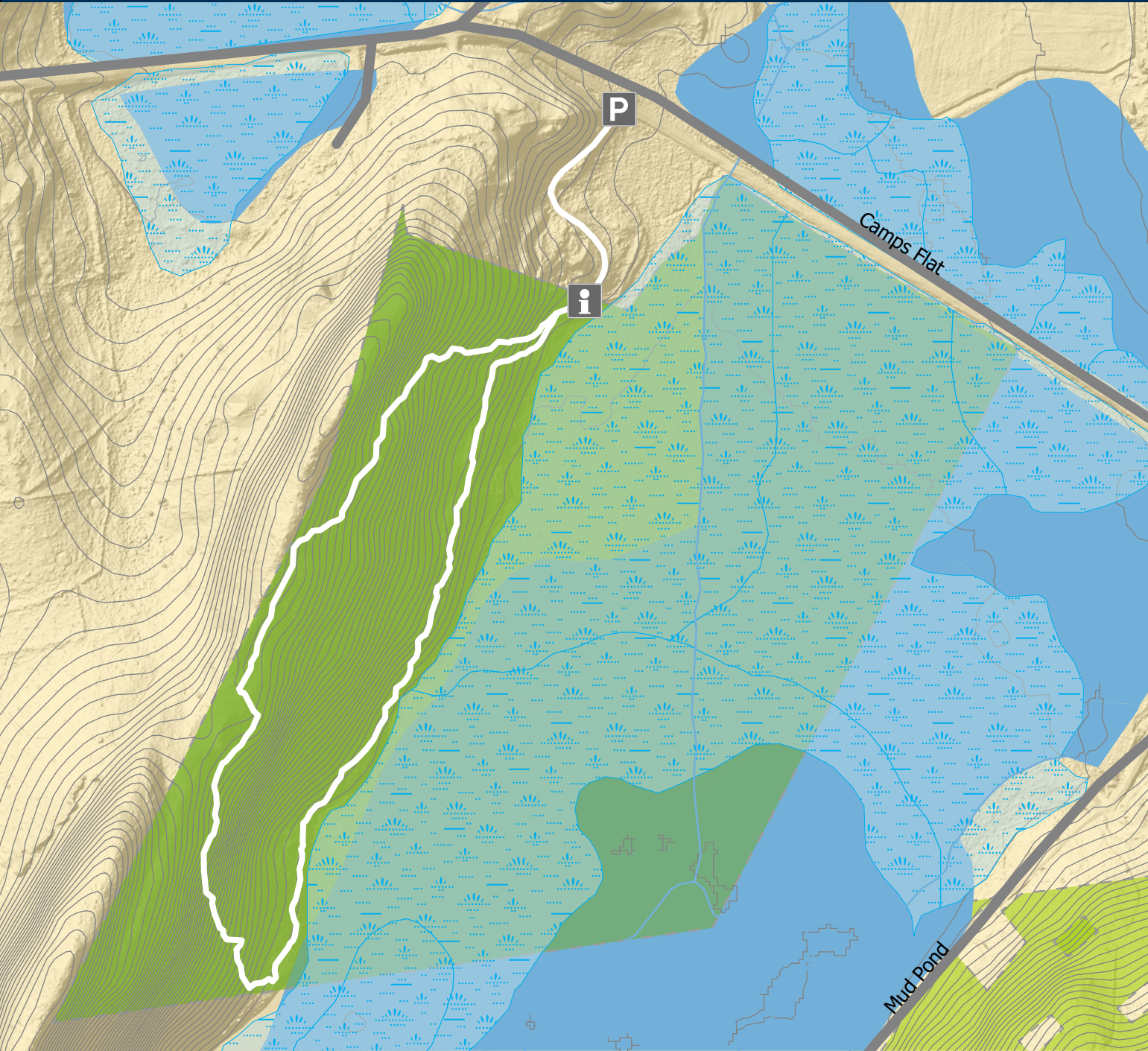


Northwest Connecticut
Land Conservancy

PROTECTING LAND AND WATER FOR PEOPLE, FOR WILDLIFE, FOREVER.

ALICE McCALLISTER
MEMORIAL SANCTUARY

74 Camps Flat Road, South Kent, CT



NCLC hiking trails are open from sunrise to sunset | Carry in, carry out | Dogs must remain on leash | Motorized vehicles are not permitted
Please remain on trails to protect flora, fauna, and neighboring properties

White Trail - 1 Mile
Difficulty Level: Moderate to Difficult

- Kiosk
- Parking

Legend

- Alice McCallister
- Wetlands
- Other NCLC Lands
- White Trail

